

Watson Mfg. Product Catalog

July 2016



Distributed By:

Typographical errors subject to correction

Watson Float Valve



**Made in
U.S.A.**

- Hot Dip Galvanized 18” steel lever and body with brass seat
- No Binding Parts
- Stainless Steel Seat available for harsher environments
- Replaceable EPDM Rubber Washer
- Constant Flow options (bleeder valve)

PART #	PRODUCT	PRICE
V34	¾” Valve with brass seat.	\$36.50
V1	1” Valve with brass seat	\$37.50
V114	1¼” Valve with brass seat.	\$43.50
V1.5	1½” Valve with brass seat.	\$51.00
V34bv	¾” Valve with bleeder valve.	\$52.50
V1bv	1” Valve with bleeder valve	\$53.50
V114bv	1¼” Valve with bleeder valve.	\$59.50
V1.5bv	1½” Valve with bleeder valve.	\$67.00

ANY ABOVE VALVE

ss	with stainless steel seat add	\$10.00
sl	with stainless steel lever add	\$8.00
bp	with side port (for bleeder) plugged add	\$7.00



Our brass bleeder valve reduces freezing problems with an adjustable constant flow. Assembled with a stainless steel screw & spring.



18" and 24" levers can be turned over to allow water to come in from the top of the tank.
24" Lever Add \$3.00



Bleeder valve *one way* extension kit adds 24" of copper tubing to direct the constant flow of water.
\$8.00



Bent levers work great in tire stock tanks or any time the inlet pipe rises higher than normal in the tank.
Add \$3.00



The 90 degree lever allows the valve to be mounted on a pipe coming into the side.
Add \$3.00

Bleeder valve *two way* extension kit adds a 24" and 60" piece of copper tubing. Aim one at the float and one at the side of the tank. \$17.00

High Volume Valves



The high volume valve with 18" lever and 8" x 12" float.

At 48 p.s.i. the 8" x 12" float is a little over half submerged.



Standard 1½" valve with ¾" brass seat on the left.

High volume 1½" valve with 1¼" brass seat on the right.

On a 1½" pipe line with gravity flow at 5 p.s.i.
 Standard valve flows up to 13 g.p.m.
 High volume valve flows up to 26 g.p.m.

On a 2" pipe line at 45 p.s.i.
 Standard valve flows up to 50 g.p.m.
 High volume valve flows up to 110 g.p.m.

PART #	PRODUCT	PRICE
HV114	1¼" High volume valve w/18" lever	\$64.50
HV1.5	1½" High volume valve w/18" lever	\$71.50
ss	Above valves with stainless steel seat add	\$12.00
bv	Above valves with bleeder valve add	\$16.00

Stainless Steel Valves

Male or Female Thread with 18" Levers



PART #	PRODUCT	PRICE
SSVM34	3/4" male SS Valve with brass poppet	\$65.00
SSVF34	3/4" female SS Valve with brass poppet	\$67.50
SSVM1	1" male SS Valve with brass poppet.	\$78.00
SSVF1	1" female SS Valve with brass poppet	\$93.50
sp	SS Valves with stainless steel poppet add . . .	\$25.00
bv	SS Valves with bleeder (for constant flow) add	\$30.00
SSHV114	1 1/4" Female SS High Volume Valve with Brass Poppet	\$135.00

Additional options available upon request

Poppet with EPDM Washer



Small poppet parts are for all 3/4" thru 1 1/2" standard valves.

PART #	PRODUCT	PRICE
PW-S	Small black EPDM washer	\$.1.50
POP-S	Brass poppet with washer	\$.18.00
DC-S	Deflector cap for small poppet	\$.2.00
PDC	Small poppet with deflector cap	\$.20.00

Large poppet parts are for 1 1/4" and 1 1/2" high volume valves.

HVPW	Large black EPDM washer	\$.4.00
HVPOP	Large brass poppet with washer	\$.30.00

Poppet with Deflector Cap



The deflector cap (used in the tank on the right) prevents water from overspraying sides of the tank

Aluminum Tube Floats



Our “tube” or “barrel” floats are welded of heavy gauge aluminum and come with 12 inches of chain for plenty of adjustment.

Their rounded design makes it more difficult for animals to bite into the float.

The standard 6” x 12” float is 339 cubic inches and is good for up to 90 p.s.i. with our standard valves.

The 8” x 12” float is 600 cubic inches for use on standard valves with higher pressures. 8” x 12” is recommended for use with the high volume valves at 60 p.s.i. or less

PART #	PRODUCT	PRICE
F612	6” x 12” Float with zinc chain\$32.50
F812	8” x 12” Float with zinc chain\$43.50
F66	6” x 6” Float with zinc chain\$31.00
F88	8” x 8” Float with zinc chain\$42.50
FS612	6” x 12” Float with stainless chain.\$39.00
FS812	8” x 12” Float with stainless chain.\$50.00
FS66	6” x 6” Float with stainless chain.\$37.50
FS88	8” x 8” Float with stainless chain.\$49.00

Watson Pan Floats



**1/4" dia. brass rod
15" long w/lock collar.**

**Pan Floats offer easy water level adjustment.
Heavy gauge aluminum with welded seams.
Available with 3/8" or 7/8" center tubes for rods or chain.**

The 12" dia. x 4" thick is 450 cubic inches for use on most applications up to 125 p.s.i. with our standard valves.

The 12" dia. x 6" thick is 675 cubic inches and offers superior shut off power on both standard and high volume valves.

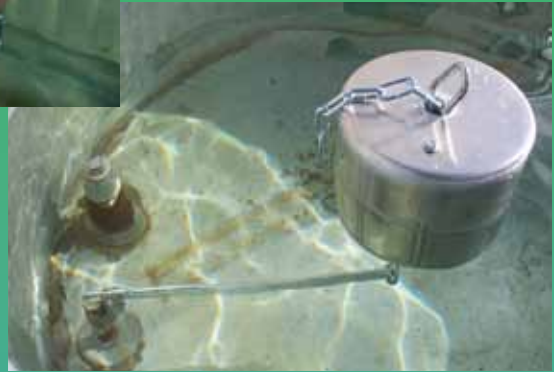
The 8" dia. x 4" thick is 200 cubic inches for use on 60 p.s.i. and lower with our standard valves.

The 6" dia. x 4" thick is for use with electric float switches.



The 8" x 8" top adjustable float is 400 cubic inches. Ideal for use in float chambers.

Keep your hands dry while adjusting water level with the easy to use aluminum carabiner and 24" of chain.



PART #	PRODUCT	PRICE
PF12-4	12" Pan Float with 3/8" center tube	\$49.50
PTFR	Brass "pig tail" float rod with lock collar	\$12.50
PFZ12-4	12" Pan Float x 4" with zinc chain.	\$52.50
PFS12-4	12" Pan Float x 4" with stainless chain	\$61.50
PFZ12-6	12" Pan Float x 6" with zinc chain.	\$60.00
PFS12-6	12" Pan Float x 6" with stainless chain	\$69.00
PF8-4	8" Pan Float with 3/8" center tube	\$41.00
PFZ8-4	8" Pan Float with zinc chain	\$43.50
PFS8-4	8" Pan Float with stainless chain	\$52.50
PF6	6" Pan Float with 3/8" center tube	\$29.00
FTA88	8" x 8" Top adjustable float with zinc chain	\$52.50
FSTA88	8" x 8" Top adjustable float with stainless chain	\$61.50

Side Mount Kits



Pre-assembled kit above.
Attach float, tighten bolts,
and you are set.



Standard fits 1 1/4" tank lip.
Wide fits 2" tank lip.



The adjustable side
mount kit (left) can be set
for 2" to 4" tank lips,
such as on concrete tanks.

All side mount kits come
with a female hose adapter.
Male hose adapter is
available upon request.



Tire Tank Kit (above and right) is for filling tire tanks with a garden hose.



Using side mount styles of float systems allow for fast filling of your stock tank with a standard garden hose. Quick and secure attachment to tank.

Standard, wide, and adjustable side mounts come with a 3/4" x 12" nipple which allows adjustment in shallow or standard depth tanks.

PART #	PRODUCT	PRICE
SSMK	Standard Side Mount Kit\$31.00
paSMFVA	Standard Side Mount Kit pre-assembled with 3/4" valve and 6" x 12" float\$111.00
SSMKFV	Standard Side Mount Kit with valve & float complete "box" set - user assembly.\$100.00
WSMK	Wide Side Mount Kit\$31.00
paWMFVA	Wide Side Mount Kit pre-assembled with 3/4" valve and 6" x 12" float\$111.00
WSMKFV	Wide Side Mount Kit with valve & float complete "box" set - user assembly.\$100.00
ASMK	Adjustable Side Mount Kit.\$39.50
BP-smk	Galvanized Bolt Pad for side mount bolts. . .	.\$2.50
TTK	Tire Tank Kit\$24.50
	Additional side mount options available	

Electric Float Switch Kits



**No need for a float valve.
Turns your pump off when tank is full.**

**Shown here complete with a
standard side mount kit.**

**The 18" long rod provides a 2" stroke.
The 36" long rod provides up to a 12" stroke.**

**The galvanized switch base can be
mounted to any of our side mount kits
or on a threaded $\frac{3}{4}$ " pipe.**

With an extension bar and longer brass rod the time between turn on and turn off can be varied.

Pictured on the right with a 36" long brass rod, this setup allows the water level to drop as much as 12" before turning on the pump.



Electric Float Switch Kit Complete
with a side mount kit and 2" stroke \$160.00

Electric Float Switch Kit Complete (extended)
with a side mount kit and 12" stroke \$180.00

Switch Base (fits on any side mount kit) \$23.00

Extended switch base (12" stroke) \$41.50

Side mount bracket (standard or wide) \$29.00

Post Bracket (Tire tank kit bracket) \$22.00

6" Pan float with 3/8" center tube \$29.00

1/4" x 18" Brass rod with lock collars \$28.00

1/4" x 36" Brass rod with lock collars \$36.00

Aluminum lock collar \$5.00

Electric Switch (pump is off when float is up) . . \$70.00

Riser Kits / Tank Nipple Kits



Each Kit Contains

- 1 - 8" Galvanized Nipple - threaded 4" on one end
- 2 - Galvanized Nuts
- 2 - Galvanized Steel Washers
- 2 - Belted Rubber Washers

Eliminates the need to solder the inlet pipe.

Can also be used for overflow into additional tanks.



Complete Kits

PART #	PRODUCT	PRICE
RK.5	1/2" Riser Kit	\$27.00
RK34	3/4" Riser Kit	\$29.50
RK1	1" Riser Kit	\$31.50
RK114	1 1/4" Riser Kit	\$32.50
RK1.5	1 1/2" Riser Kit	\$35.50
RK2	2" Riser Kit	\$43.50

Individual Parts

Galvanized Steel Washer - any size \$4.25

1/8" Thick Belted Rubber Washer - any size \$3.50

Tank Nipple with 4" of thread on one end

PART #	PRODUCT	PRICE
RP.5	1/2" x 8"	\$11.50
RP34	3/4" x 8"	\$12.50
RP1	1" x 8"	\$14.50
RP114	1 1/4" x 8"	\$16.00
RP1.5	1 1/2" x 8"	\$18.00
RP2	2" x 8"	\$19.00

Galvanized pipe nut for tank nipple

PART #	PRODUCT	PRICE
PN.5	1/2"	\$2.75
PN34	3/4"	\$3.50
PN1	1"	\$4.00
PN114	1 1/4"	\$4.50
PN1.5	1 1/2"	\$6.00
PN2	2"	\$8.00

Watson Valve Parts / Accessories

PART #	PRODUCT	PRICE
VB1	1" Valve body with brass seat (other sizes available, call for quote)	\$19.00
PW-S	Small poppet washer for standard valves.	\$1.50
POP-S	Small brass poppet for standard valves	\$18.00
PDC	Small brass poppet with deflector cap for standard valves.	\$20.00
DC	Deflector cap for small poppet	\$2.00
HVPW	Large poppet washer for high volume valves	\$4.00
HVPOP	Large brass poppet for high volume valves	\$30.00
<hr/>		
L18	Standard 18" straight lever.	\$11.00
LB18	18" Lever with 4" bend (good for use with tire stock tanks)	\$14.00
L90	18" Lever with 90 degree angle (for side inlets)	\$14.00
L24	24" Lever (for higher pressures)	\$14.00
<hr/>		
BV	Brass bleeder valve with elbow (for constant flow)	\$14.00
BVE1K	One way bleeder valve extension kit	\$8.00
BVE2K	Two way bleeder valve extension kit	\$17.00
<hr/>		
ZCK-12	12" Zinc chain kit for tube float (chain, nuts, bolts, washers)	\$4.00
SSCK-12	12" Stainless steel chain kit for tube float (chain, nuts, bolts, washers)	\$8.00
ZCK-24	24" Zinc chain kit (chain, nuts, bolts, washers, carabiner)	\$7.00
SSCK-24	24" Stainless steel chain kit (chain, nuts, bolts, washers, carabiner)	\$10.00
SSTF	Stainless steel swivel (for mounting tube float directly to valve)	\$10.00
PTFR	Brass pig tail foat rod (¼" dia. x 15" long) with aluminum lock collar	\$12.50
ALC	Aluminum lock collar (for ¼" dia. brass float rods).	\$5.00

Pricing current as of July 1, 2016

Pricing errors subject to correction



Watson Welding & Mfg. Inc.
 117 South Adams Ave.
 P.O. Box 397
 Morrill, NE 69358
 800-292-2987
 308-247-3312 Fax
 watson_floatvalves@yahoo.com
 www.floatvalveusa.com

